

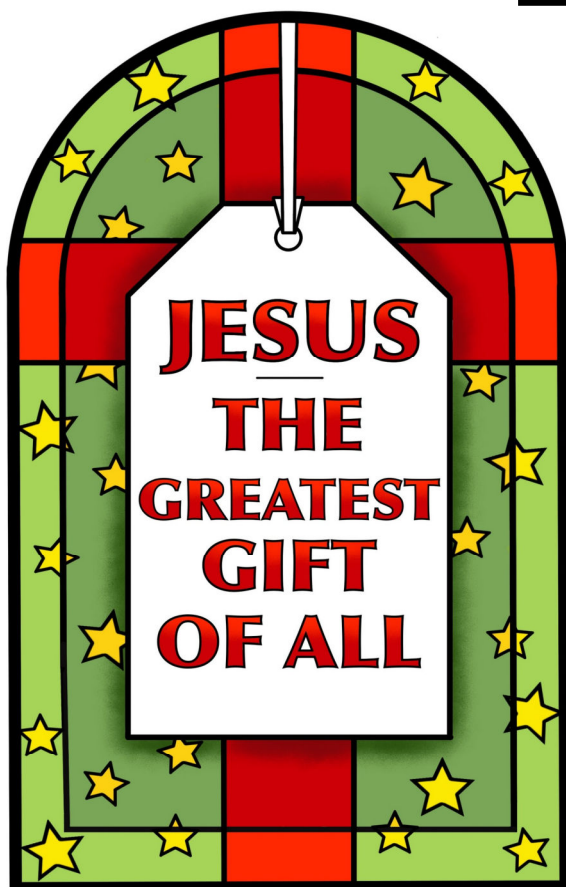
St George's Parish Church Stalybridge



 THE CHURCH
OF ENGLAND
Diocese of Manchester

CHURCH
FOR A
DIFFERENT
WORLD

50p



December 2024 & January 2025

St George's Church Stalybridge

Vicar	Rev Denise Owen Therevd.dowen@yahoo.co.uk	07741 269102
Wardens	Mrs Valerie Fallows	0755 325 8674
Deputy Wardens	Mrs Christine Crabtree	0161 285 1775
Safeguarding Co-ordinator P.C.C. Secretary	Mrs Karen Watkins	07514 207454
Treasurer	Mr Andrew Watkins	07970 079306
Magazine Editor	Mrs Linda Hurst	0161 330 0518
Room Hire	Mrs Jean McManus	0161 339 1394

FACEBOOK
@stgeorgestalybridge

www.stg.org.uk
TWITTER
@StGStalybridge

For baptisms, marriages or funerals or to have the name of a departed friend or relation entered in the Book of Remembrance, please contact the Wardens on 07553 258674 or stgeorge.wardens@yahoo.com.

*Baptisms are usually conducted at 12.30 pm
on the 1st & 3rd Sundays of the month.*

*To receive Communion at home when you are sick or housebound, please
contact Chris Crabtree on 07714235736 or
Karen Wright on 07443451112*

Dear Sisters and Brothers in Christ,



Well, Advent and Christmas are here again. In church we'll be hearing the stories of how the patriarchs and prophets spoke about the coming of the Messiah and about how John the Baptist and the Blessed Virgin Mary prepared the way and said, 'Yes' to God respectively. We will hear the familiar stories of stables and angels and wise men. Wonderful, beautiful and miraculous stories which add so much to how we understand the birth of Christ and to the richness of our faith.

Christmas is a busy time, but it is a time of joy and celebration, or should be at least. It can also seem to be quite a short time. I sometimes feel that all our expectations are so focused on that one day, Christmas Day, that we forget that for the Church Christmas is a whole season. The birth of our Saviour is something to celebrate, and in the Church that takes weeks!

I don't know about you, but I like to have some Christmas related things on display in the vicarage all year round. I have a Christmas card on a book shelf with a couple of small nativities scenes. I also have some angels and a tealight holder with a picture of the wise men on their journey. Weird? Possibly, but as Christians the story we tell isn't dependent on time moving in a straight line, rather, time and events intermingle and are connected to God's time which is eternity.

We learn of the birth of Christ each year at Christmas, but we already know and live in the light of Easter. My little objects and ornaments remind me of that, and I like to see my nativity scenes even in the height of summer. In fact, they take on a different significance when the nights are shorter and the hours of daylight are longer. The miracle of the Incarnation is not just for Christmas, to coin a phrase. Each time we come together for worship we are participating in Christmas, Easter, Pentecost and all the other events which are the foundation of our faith. An amazing and wonderful truth.

And so, it only remains for me to wish you a very Joyful Christmas and a Peaceful and Happy New Year.

Yours in Christ,

Revd Denise

+++++

Service Details

Sundays

9.30am Parish Eucharist with hymns

every 1st, 2nd, 3rd and 5th Sunday in the month.

9.30am Worship for All - a simple Sunday service for everyone of all ages, including Holy Communion, every 4th Sunday in the month

Tuesdays

10.30am Holy Communion

For baptisms, weddings, funerals and all other enquiries please contact the Wardens on email: stgeorge.wardens@yahoo.com

+++++

What a community!

I love the people at Saint George's - you are all amazing!

Over the past year, so many people have come together to help in the life of the Church. Many of them appear to go unnoticed, as they keep quiet about what they are doing.

The maintenance team are amazing – they keep our building and grounds secure, warm and looking it's best. They paint the ladies loos, experiment with the heating to make sure we are warm but not wasting money, they put up lights, sort out the notice boards, meet with builders to arrange bigger projects and many, many other things that they spot need doing. Thank you!

Our cleaning team keep everything looking it's best – they vac, polish, tidy, clean the loos, clean the kitchen, shampoo the carpets (you get the idea) – in fact, we had a visitor a few weeks ago who was astounded that we have a cleaning team – mentioning that they are not so lucky at their church, so thank you!

We have people who serve refreshments, welcome people into Church, run Brownies and Guides, help at baptisms, weddings and funerals, run the Thursday café and Dementia Café, arrange rotas, help with communion on a Sunday, visit people who are not able to attend Church, sing in the choir, play the organ, read, lead us in prayer, write the pewsheet, write the magazine, print the magazine, put up the Christmas tree, make the advent wreath – the list goes on (and on).

Thank you to everyone who helps in any way at all – you are appreciated! We may bicker every now and then, but as in any family, this is inevitable, and we still pull together when needed. Thank you all for being part of it.

Parish Share



Over the past few months, I've been writing about the Diocese of Manchester's parish share scheme. I've tried to explain what the money we contribute is used for and what we receive in return. I've emphasised how important it is to pay the parish share in order to support the structures in the Diocese and the parish system itself. I also touched on the Biblical principle behind parish share. In the Acts of the Apostles, we read of those very first churches sharing their resources with each other and with those in need. The parish share system reflects this action and generosity of the early Church.

There is another principle advocated by the Church of England in relation to giving. This is not directly linked to the parish share but I hope you'll see why I'm writing about it. The Church of England suggests giving 5% of your income to your local parish church or the church where you regularly worship and 5% to other good causes. This is based on the Biblical principle of tithing. That is to give 10% of what you receive away. 10% or even 5% might seem like a large percentage, but calculating in this way means that we are all giving the same proportion to the church and other charities or organisations. For some people 5% or 10% might be a stretch especially at the moment when prices on basic goods and services are continuing to rise and no one should be giving more than they can afford.

But have you ever considered what percentage of your income you are giving? Would you find this a helpful way of thinking about your giving? If not, I have asked you to consider in a previous article about parish share, when you last increased your regular giving. If you haven't increased your regular giving in the past few years, then the new year is a good time to do it. If you give £10 per week, could you increase it to £13? Or if you give £5, could you increase that to £8?

I wouldn't want anyone to be struggling financially in order to support the church or any other charities, but I would encourage you to give this issue some thought. As we read in 2 Corinthians 9.17, 'God loves a cheerful giver'.

Rev'd Denise

+++++

Ridge Hill Lane WMC

Main room can be booked free of charge
for various functions, subject to availability

Artistes regularly

All live sport shown on
large screens



Pool tables

Children allowed under supervision

New members always welcome

Contact manager for further info on

07450352283



My Feet

MOBILE Chiropody & Podiatry
Foot care at home

Nail care,
Corns,
Callus,
Fungal infections,
Ingrowing toe nails.
Footwear advice
Insoles, and other
foot related problems.

Janette McLean
BSc (Hons) Podiatry

Tel: 0161 338 8950
Mobile: 07961 583 668



HPC registered Podiatrist

Carr's

THE BAKERS
of Stalybridge
Wholesale and Retail



Est.1922
44-46 RIDGEHILL LANE
STALYBRIDGE
0161 338 2177
164 MOSSLEY ROAD
ASHTON-UNDER-LYNE
0161 330 1341

Readings and Psalms for December 2024

Sun 1st	1st Sunday of Advent 9.30 Jeremiah 33.14-16; Psalm 25.1-9; 1 Thessalonians 3.9-end; Luke 21.25-36 18.00 Advent Carol Service
Tues 5 th	10.30 Isaiah 11.1-10; Psalm 72.1-4,18-19; Luke 10.21-24
Sun 8th	2nd Sunday of Advent 9.30 Malachi 3.1-4; Canticle: Benedictus; Philippians 1.3-11; Luke 3.1-6
Tues 10 th	10.30 Isaiah 40.1-11; Psalm 96.1,10-end;Matthew 18.12-14
Sun 15th	3rd Sunday of Advent 9.30 Zephaniah 3.14-end; Psalm 146.4-end; Philippians 4.4-7; Luke 3.7-18 18.00 A Festival of Nine Lessons and Carols
Tues 17 th	10.30 Genesis 49.2,8-10; Psalm 72.1-5,18-19; Matthew 1.1-17
Sun 22nd	4th Sunday of Advent 9.30 Micah 5.2-5a; Luke 1 67-79 <i>Worship for All</i> 14.00 Christingle and Blessing of the Crib Service
Tues 24th	Christmas Eve 10.30 2. Samuel 7.1-5,8-11,16; Psalm 89.2,19-27; Acts 13.16-26; Luke 1.67-79 23.00 Isaiah 52.7-10;Psalm 98; Hebrews 1.1-4;John 1.1-14
Wed 25th	Christmas Day 9.30 Isaiah 9.2-7; Psalm 96; Titus 2.11-14; Luke 2.1-14
Sun 29th	1st Sunday of Christmas 9.30 1 Samuel 2.18-20,26; Psalm 148.7-end; Colossians 3.12-17; Luke 2.41-end
Tues 31 st	10.30 1 John 2.18-21; Psalm 96.1,11-end; John 1.1-18

Brunch with Santa!

Santa is joining us again this year
on Saturday 7th December
We still have a few spaces left for
the afternoon session (1pm-3pm)
so please do book soon to avoid disappointment.
The cost is £5 per child - which includes a gift
from Santa, the cost for adults is £3
to cover the cost of brunch.

Please email Val on

brunchwithsanta@yahoo.com



Christmas Fair

Thank you to everyone who helped and supported the
Christmas Fair. We were very concerned on the morning of
the fair, thinking that Storm Bert might deter many.
However, everyone braved the weather and it ended up being
as full as ever!

Lots of people enjoyed a hot drink and toastie (or delicious
hot pot) while being entertained by
Tameside Community Voices.

Upstairs we had a variety of stalls, including Christmas
decorations, beautiful resin and stained glass ornaments. As
well as the ever faithful chocolate tombola, bottle stall and
bargain basement. There was something for everyone!
Local businesses such as Magpies Nest, Stamford Golf Club,
Stalybridge Celtic, Morrisons and KFC generously gave us
prizes for the raffle.

We are so blessed and receive support from so many people.
We are still awaiting the final total but it's in excess of
£1600!!!

Our Virtual Christmas Fair continues to run on
Facebook right up until to Christmas.

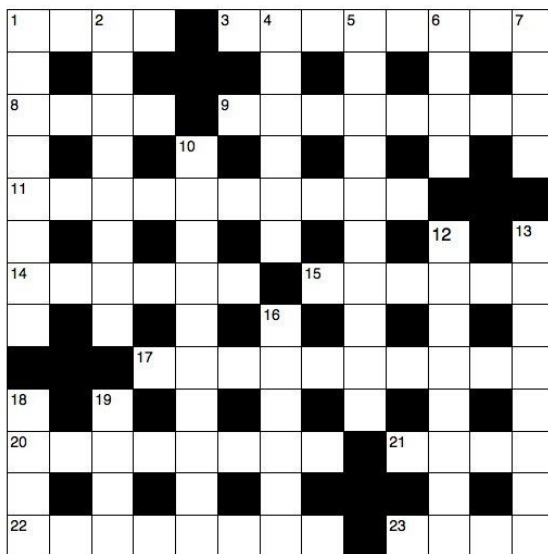
All stall holders are local so this is a great
opportunity to support
our local Community.

Some dates for your diary - December 2024

Sun	1st	9.30 a.m.	Parish Eucharist with hymns
		6.00 p.m.	Advent Carol Service
Mon	2nd	9 a.m. - 11 a.m.	Tiny Tots
Tues	3rd	10.30 a.m.	Holy Communion
Wed	4th	6.30 p.m.	Brownies
		7.30 p.m.	Guides
Thurs	5th	9 a.m. - 11 a.m.	Tiny Tots
		1.00 p.m. - 3.00 p.m.	Come Together Café for coffee, chat & activities
		7.30 p.m.	Tameside Community Voices Practice
Fri	6th	11.30 a.m. - 2 p.m.	Dementia Café - please book places on 07714235736
Sat	7th	10am -12 noon	Brunch with Santa
		1pm - 3pm	Brunch with Santa
Sun	8th	9.30 a.m.	Parish Eucharist with hymns
Mon	9th	9 a.m. - 11 a.m.	Tiny Tots
Tues	10th	10.30 a.m.	Holy Communion
Wed	11th	6.30 p.m.	Brownies
		7.30 p.m.	Guides
		7.30 p.m. - 9 p.m.	Informal prayer at St John the Baptist, Roughtown
Thurs	12th	9 a.m. - 11 a.m.	Tiny Tots
		1.00 p.m. - 3.00 p.m.	Come Together Café for coffee, chat & activities
		7.30 p.m.	Tameside Community Voices Practice
Sun	15th	9.30 a.m.	Parish Eucharist with hymns
		6.00 p.m.	A Festival of Nine Lessons and Carols
Mon	16th	9 a.m. - 11 a.m.	Tiny Tots
Tues	17th	10.30 a.m.	Holy Communion
Wed	18th	6.30 p.m.	Brownies
		7.30 p.m.	Guides
Thurs	19th	9 a.m. - 11 a.m.	Tiny Tots
		1.00 p.m. - 3.00 p.m.	Come Together Café for coffee, chat & activities
		7.30 p.m.	Tameside Community Voices Practice
Fri	20th	11.30 a.m. - 2 p.m.	Dementia Café - please book places on 07714235736
Sat	21st	6.00 p.m.	Carols and Mulled Wine
Sun	22nd	9.30 a.m.	Parish Eucharist with hymns
		2.00 p.m.	Christingle and Blessing of the Crib Service
Tues	24th	10.30 a.m.	Holy Communion
		11.00 p.m.	Midnight Mass
Wed	25th	9.30 a.m.	Christmas Day Eucharist with hymns
Sun	29th	9.30 a.m.	Parish Eucharist with hymns
Tues	31st	10.30 a.m.	Holy Communion

For more information please go to our website www.stg.org.uk

December Crossword



Across

1 'The blind receive sight, the — walk' (Luke 7:22) (4), 3 Got (Philippians 3:12) (8), 8 Leave out (Jeremiah 26:2) (4), 9 Castigated for using dishonest scales (Hosea 12:7) (8), 11 Weighty (1 John 5:3) (10), 14 'Now the serpent was more — than any of the wild animals the Lord God had made' (Genesis 3:1) (6), 15 'Those controlled by the sinful nature cannot — God' (Romans 8:8) (6), 17 Because Israel lacked one of these, tools had to be sharpened by the Philistines (1 Samuel 13:19) (10), 20 In his vision of the two eagles and the vine, this is how Ezekiel described the latter (Ezekiel 17:8) (8), 21 Rite (anag.) (4), 22 Nine gigs (anag.) (8), 23 'The eye cannot say to the — , "I don't need you"' (1 Corinthians 12:21) (4)

Down

1 'Flee for your lives! Don't — — , and don't stop anywhere in the plain!' (Genesis 19:17) (4,4), 2 Principal thoroughfare (Numbers 20:19) (4,4), 4 'The tax collector... beat his — and said, "God have mercy on me, a sinner"' (Luke 18:13) (6), 5 'The zeal of the Lord Almighty will — this' (2 Kings 19:31) (10), 6 'The day of the Lord is — for all nations' (Obadiah 15) (4), 7 Specified day (Acts 21:26) (4), 10 Deadly epidemic (Deuteronomy 32:24) (10), 12 Roman Catholic church which has special ceremonial rights (8), 13 Tied up (2 Kings 7:10) (8), 16 In his speech to the Sanhedrin, Stephen described Moses as 'powerful in speech and — ' (Acts 7:22) (6), 18 'Although he did not remove the high places, — heart was fully committed to the Lord all his life' (1 Kings 15:14) (4), 19 Tribe (Deuteronomy 29:18) (4)

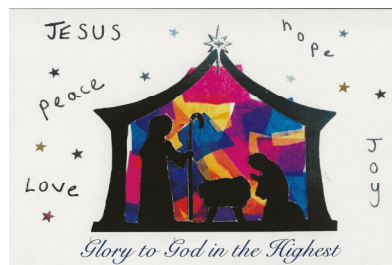
Christmas Services and events at St George's

Advent Carol Service

We start the season of advent with our advent carol service on

Sunday 1st December at 6pm.

Join us as we celebrate the season and look ahead to what's to come.



Nine Lessons and Carols

Our traditional Nine Lessons and Carols service will be held on

Sunday 15th December at 6pm.

Join us for this beautiful candle lit service as we hear about the Greatest Story through Carols and Words

Christingle and Blessing of the Crib

Christmas Eve at 2pm

This service is aimed at young people and families, but of course, everyone is welcome. You will be able to join in as everyone arrives at the Inn - will there be room for them all? Join us as we find out.

You could even dress up as your favourite character!

As if that wasn't enough, we will learn about the Christingle!

You will be able to take your Christingle home and tell others about it (but how long will your sweets last?)

Midnight Mass

This year our Christmas Eve Mass will be held at 11pm.

What a wonderful way to celebrate the birth of Jesus!

Please join us if you can.

Christmas Day Eucharist

Christmas Day at 9.30am led by Revd Craig Roberts

+++++

Have you heard about our Carols and Mulled Wine event?

Join us for a very informal get together, where we will sing all our favourite carols, enjoy a mulled wine and a mince pie. A perfect way to relax after the stresses of all the present wrapping and Christmas card writing, and reflect on the real reason we have Christmas.

Saturday 21st December at 6pm

£5 per ticket to cover the cost of refreshments

Contact Chris to book your place and nominate your favourite carol!

Telephone: 07714 235736

Why Do They Do That?

Have you ever wondered why we do things in the church during worship the way we do? I mean, have you ever wondered why we are encouraged to share the Peace? Or why the priest stands at the altar with both hands held up during certain prayers? Or why I genuflect or bow at certain points?

Well, I thought I'd try to explain some of these things over the next few months, but I'm going to start at the end not the beginning.

So, why do we do the final Dismissal at the very end of the service from the back of church and not the front?

Well, the idea behind this is fairly simple. You are being 'dismissed' to go out into the world. 'Dismissed' doesn't seem quite the right word to use, a better phrase would be 'sent out'. You have heard God's word, worshipped and prayed. You have received the Holy Sacrament or a blessing and you should now feel, or more accurately be, empowered, able and willing, to go out into the world in the name of Christ to live your lives in His name and in His power. In other words what we have done and received in church should sustain our lives as God's people throughout the week or until we gather together again as the Body of Christ in this place.

Doing this from the back of church means the priest and liturgical deacon are standing near the main church door, the door through which you'll leave the building and which leads out into the world. This action, as with many other actions in the Church is symbolic. As you leave the church you are taking Christ with you.

So that's why we do that!

Please do forgive me if you already know all these things, but if you have any questions about other things we do, let me know and I'll try to answer.

Revd Denise

+++++

Some dates for your diary - January 2025

Thurs	2nd	1.00 p.m. - 3.00 p.m.	Come Together Café for coffee, chat & activities
Fri	3rd	11.30 a.m. - 2 p.m.	Dementia Café - please book places on 07714235736
Sun	5th	9.30 a.m.	Parish Eucharist with hymns
Mon	6th	9 a.m. - 11 a.m.	Tiny Tots
Tues	7th	10.30 a.m.	Holy Communion
Wed	8th	6.30 p.m.	Brownies
		7.30 p.m.	Guides
		7.30 p.m. - 9 p.m.	Informal prayer at St John the Baptist, Roughtown
Thurs	9th	9 a.m. - 11 a.m.	Tiny Tots
		1.00 p.m. - 3.00 p.m.	Come Together Café for coffee, chat & activities
		7.30 p.m.	Tameside Community Voices Practice
Sun	12th	9.30 a.m.	Parish Eucharist with hymns
Mon	13th	9 a.m. - 11 a.m.	Tiny Tots
Tues	14th	10.30 a.m.	Holy Communion
Wed	15th	6.30 p.m.	Brownies
		7.30 p.m.	Guides
Thurs	16th	9 a.m. - 11 a.m.	Tiny Tots
		1.00 p.m. - 3.00 p.m.	Come Together Café for coffee, chat & activities
		7.30 p.m.	Tameside Community Voices Practice
Fri	17th	11.30 a.m. - 2 p.m.	Dementia Café - please book places on 07714235736
Sun	19th	9.30 a.m.	Parish Eucharist with hymns
Mon	20th	9 a.m. - 11 a.m.	Tiny Tots
Tues	21st	10.30 a.m.	Holy Communion
Wed	22nd	6.30 p.m.	Brownies
		7.30 p.m.	Guides
Thurs	23rd	9 a.m. - 11 a.m.	Tiny Tots
		1.00 p.m. - 3.00 p.m.	Come Together Café for coffee, chat & activities
		7.30 p.m.	Tameside Community Voices Practice
Sun	26th	9.30 a.m.	Parish Eucharist with hymns
Mon	27th	9 a.m. - 11 a.m.	Tiny Tots
Tues	28th	10.30 a.m.	Holy Communion
Wed	29th	6.30 p.m.	Brownies
		7.30 p.m.	Guides
Thurs	30th	9 a.m. - 11 a.m.	Tiny Tots
		1.00 p.m. - 3.00 p.m.	Come Together Café for coffee, chat & activities
		7.30 p.m.	Tameside Community Voices Practice



CHRISTMAS SHOPPING ONLINE?

Remember to use easyfundraising whenever you shop online. It's easy and completely FREE! Over 4,000 shops and sites will donate to us when you use easyfundraising to shop with them – at no extra cost to yourself!

Please sign up to support us at
www.easyfundraising.org.uk/causes/stgeorgeschurchstalybridge

+++++

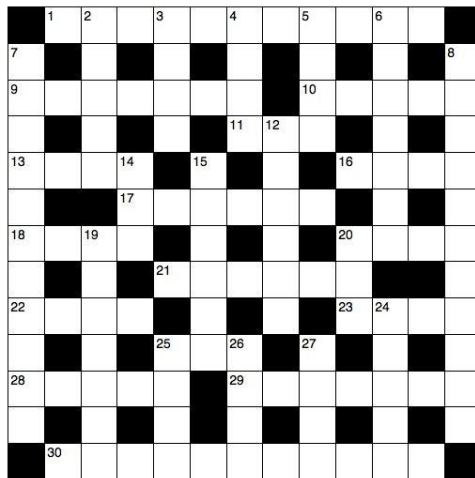
200 Club

November winners

1st prize £25 no 57 Sylvia Barrett; 2nd prize £15 no 5 Gill Cooper;
 3rd prize £10 no 62 Malcolm Brooker

Thank you for your continued support of the 200 Club. If you would like to join the 200 Club please speak to Rose. There are still some numbers available and the cost is £12 per number you hold for the full year.

January Crossword



Across

1 Paul said the wrath of God 'is being revealed from heaven' against this (Romans 1:18) (11), 9 Go smite (anag.) (7) 10 'But — I have risen, I will go ahead of you into Galilee' (Matthew 26:32) (5), 11 'Take and —; this is my body' (Matthew 26:26) (3) 13 Type (2 Thessalonians 2:10) (4), 16 'Woe to those who — iniquity' (Micah 2:1) (4), 17 'How shall we — if we ignore such a great salvation?' (Hebrews 2:3) (6), 18 Opposite of evens (4), 20 Previously cited (Latin) (4), 21 'There is surely — — of God in this place, and they will kill me because of my wife' (Genesis 20:11) (2,4), 22 The Thessalonians were warned to keep away from every brother who was this (2 Thessalonians 3:6) (4), 23 Beat (anag.) (4), 25 To trouble or afflict (Job 16:3) (3), 28 Part of a roof (1 Kings 7:9) (5), 29 Attain (Job 5:12) (7), 30 Insect noted for its gymnastic ability (Psalm 78:46) (11)

Down

2 Smell (John 11:39) (5), 3 Lion's home (Jeremiah 25:38) (4), 4 'Jesus Christ is the — yesterday and today and for ever' (Hebrews 13:8) (4), 5 Tidy (4), 6 Made their home (Genesis 47:27) (7), 7 Their task was to carry the curtains of the tabernacle (Numbers 4:25–26) (11), 8 Timothy's was called Lois (2 Timothy 1:5) (11), 12 The Lover likened the fragrance of the Beloved's breath to these (Song of Songs 7:8) (6), 14 Times Educational Supplement (1,1,1), 15 Eight-tentacled sea creatures (6), 19 'And lead us not into temptation, but — us from the evil one' (Matthew 6:13) (7), 20 D.L. Moody's legendary song leader, — D. Sankey (3) 24 Rarely used musical note (5), 25 'Your will be done on earth — it — in heaven' (Matthew 6:10) (2,2), 26 and 27 'The Lord Almighty will — them with a — , as when he struck down Midian at the rock of Oreb' (Isaiah 10:26) (4,4) 27 See 26 Down

Iconic Bethlehem Carol Sheet celebrates 70 years in print

It was back in 1954 when the charity, BibleLands Mission Aid Society, first tentatively decided to print a colourful compilation of popular Christmas carols, alongside images of some of the people BibleLands served.

From the start, the scheme was an immense success. The carol sheets were so popular that even that first year, 100,000 copies were insufficient to meet the demand of schools, churches, British army bases at home and abroad and Royal Navy ships across the world. The donations appeal towards the BibleLands projects in the carol sheet also raised hundreds of pounds.

When 500,000 copies were quickly sold in 1955, BibleLands knew it had a winner on its hands.

So it was that, in 1956, with 1.5 million carol sheets sales as the target, an accompanying catalogue of Christmas cards and gifts and prayers for God's favour was also launched. The plan was overwhelmingly successful – much needed funds were raised for the work of BibleLands.

Since then, many millions of carol sheets have been sold, until this year the charity, now renamed Embrace the Middle East, has produced a new-look Edition with 27 popular carols, including three new additions for this year: *O Holy Night*, *See Him Lying on a Bed of Straw (Calypso Carol)* and *The Angel Gabriel from Heaven Came*.

For more information or to purchase your copy, visit <https://shop.embraceme.org/collections/bethlehem-carols>



+++++

November Crossword Solution

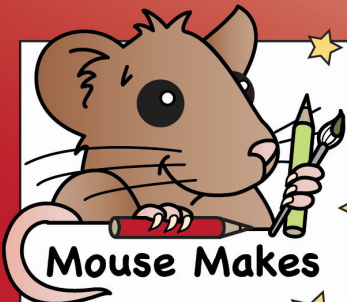
ACROSS: 1, Charioteers. 9, Immoral. 10, Cairo. 11, SAE. 13, Inns. 16, Firm. 17, Accuse. 18, East. 20, Ogam. 21, Judith. 22, Seba. 23, Msgr. 25, Den. 28, Inane. 29, Entreat. 30, Chrysoprase.

DOWN: 2, Human. 3, Rare. 4, Oils. 5, Ecce. 6, Raising. 7, Citizenship. 8, Commemorate. 12, Assail. 14, Sat. 15, Scouse. 19, Sabbath. 20, Ohm. 24, Seeds. 25, Deny. 26, Nero. 27, Star.

December Crossword Solution

ACROSS: 1, Lame. 3, Obtained. 8, Omit. 9, Merchant. 11, Burdensome. 14, Crafty. 15, Please. 17, Blacksmith. 20, Splendid. 21, Tier. 22, Singeing. 23, Hand.

DOWN: 1, Look back. 2, Main road. 4, Breast. 5, Accomplish. 6, Near. 7, Date. 10, Pestilence. 12, Basilica. 13, Tethered. 16, Action. 18, Asa's. 19, Clan.



Mouse Makes

"Jesus said,
I am the ____ Y
and the ____ U ____
and the ____ I ____.
No one comes to the Father
except through me."
John 14:6

"The child to be born
will be called
H ____, the
____ of ____"
Luke 1:35

"For unto you is born
this day a
S ____
____ who is
____ R ____
the ____ R ____"
Luke 2:11

THE GREATEST GIFT

"She will bear a son,
and shall call his name

for he will save his
people from their sins."
Matthew 1:21

"Jesus said,
I am the

and the life."
John 11:25

B L I G H T L O
R A Y W O J J R
E M M A N U E L
A B Y J E S O
D S A V I O U R
S A V R J S D

O H O L Y O R C R T U
S O N O F M A N H A R T
N L S H E P H E R D U
O Y A E P E R G I F T G
C H R I S T M A S T H S
R E S U R R E C T I O N

JESUS
—
THE
GREATEST
GIFT
OF ALL!

P R O P H E T I
R E D E E M E R
I E M I L I G
E M E S S I A H
S R M E G F T
T E A C H E R E

E V E R L A S T I N G
K I N G O F K I N G S
I N K I G W F D O U
S E S O N O F G O D D
S E W O C O U W O R D
C O U N S E L L O R U

EMMANUEL • MESSIAH • REDEEMER • KING OF KINGS • WORD
SON OF MAN • EVERLASTING • SHEPHERD • PRIEST • PROPHET • TEACHER
LIGHT • BREAD • VINE • DOOR • COUNSELLOR • CHRISTMAS • GIFT

Find the words from the Bible verses too!

Tameside Toy Appeal

Thank you to everyone who has donated to the Tameside Toy Appeal.

Many of the families living in our communities are facing hardship and living in poverty. Christmas is, as always, a difficult time of year for many families in Tameside, and the pressure to ensure their children wake up to presents on Christmas morning is huge. Recent research showed that more than a third of Tameside children are living in poverty. 'Heat or Eat' will be a real choice for so many families this winter and Christmas is something they simply can't afford. So, it's back for 2024, the annual Tameside Toy Appeal and we need your help to reach those children living in poverty...your donation could make a difference this Christmas!

We need donations of new and unwrapped toys/gifts for children aged 0-18.

Every gift donated to the Tameside Toy Appeal will be given to a child in Tameside whose family is experiencing poverty. In previous years this appeal has been incredibly successful and we have been able to donate so many toys and gifts to ensure that disadvantaged children in Tameside wake up to something under their tree on Christmas morning.

Together, we can make great things happen again this Christmas!

Here are a few gift idea suggestions...

0-5 years : Sensory toys, books, building blocks, bath toys, play mats, teethingers, dolls, cars, activity toys, fancy dress costumes, musical toys, puzzles

5-11 years : Colouring books and pencils, jigsaws, arts and craft kits, Play dough, Lego, science kits, remote control toys, sports games, board games, fidget toys

12-18 years : Stationery, cosmetic gift sets, headphones, watches, speakers, hot water bottles, make up, card games, snoodies

All ages : Books, gloves, hats, pyjamas, scarves, slippers, socks

There are many drop off points throughout Tameside – Saint George's, Stalybridge being one of them. The last day we can accept donations at Church is Sunday 8th December – we will then take them to the local collection point on your behalf, so they can be wrapped and distributed in time for Christmas.

Thank you for your generosity.

If your family would like to receive support from this year's Tameside Toy Appeal please get in touch with your local Referral Agency who will complete a Nomination Form on your behalf and send to the nearest Children's Centre. Your Local Referral Agencies include; support workers, schools, doctors, housing associations, children's centres, social prescribing team, social worker and local community groups.

Please note, Action Together and Saint George's cannot accept nominations directly. We facilitate the appeal but do not make referrals - please contact a Referral Agency local to you as detailed above.

Please do ask for help if you need it.

Readings and Psalms for January 2025

Sun 5th Epiphany

9.30 Isaiah 60.1-6; Psalm 72.10-15; Ephesians 3.1-12;
Matthew 2.1-12

Tues 7th 10.30 1 John 4.7-10; Psalm 72.1-8; Mark 6.34-44

Sun 12th 1st Sunday of Epiphany - Baptism of Christ

9.30 Isaiah 43.1-7; Psalm 29; Acts 8.14-17; Luke 3.15-17,21-22

Tues 14th 10.30 Hebrews 2.5-12; Psalm 8; Mark 1.21-28

Sun 19th 2nd Sunday of Epiphany

9.30 Isaiah 61.1-5; Psalm 36.5-10; 1 Corinthians 12.1-11;
John 2.1-11

Tues 21st 10.30 Hebrews 6.10-end; Psalm 111; Mark 2.23-end

Sun 26th 3rd Sunday of Epiphany

9.30 Nehemiah 8.1-3,5-6,8-10; Luke 4.14-21
Worship for All

Tues 28th 10.30 Hebrews 10.1-10; Psalm 40.1-4,7-10; Mark 3.31-end

+++++

Wrap up Tameside

Wrap Up is a campaign run by local Rotary Clubs, in partnership with the registered charity Hands On London.

Thick warm winter coats donated to Wrap Up are collected by volunteers and each garment is inspected to ensure it is clean and in a good condition to be given away.

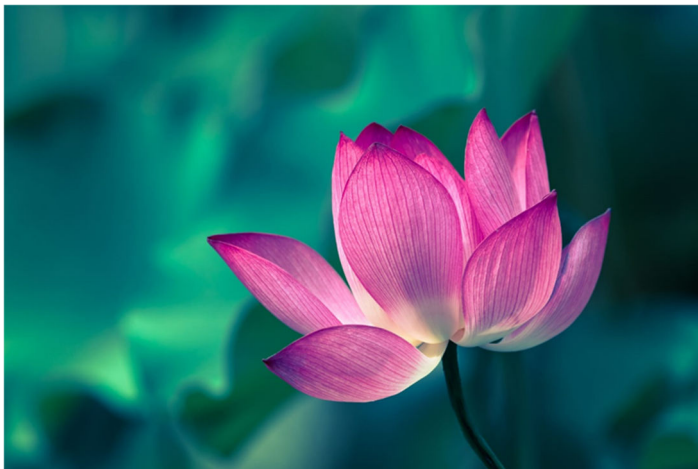
Their motto of "Is this coat good enough for you to wear" ensures that only good quality coats are distributed to the charitable organisations. The collected coats are distributed via homeless shelters, refugee centres, organisations supporting the elderly, women's refuges, children's centres and other charities helping people in crisis.

They do not give coats direct to families, because they firmly believe that the charitable organisations can identify support and resources to benefit those in need or signpost them to organisations that could help, thereby creating a lasting relationship between those in need and the organisation that could transform their lives.

Saint George's Church was a collection point for this campaign – and you did not disappoint! Your donations have been collected – and two trips were needed because there were so many donations. Rest assured that your donations will have an impact on people living in Tameside.

It is likely that the campaign will continue to run annually.

*St George's Dementia Café,
Church Walk, Stalybridge SK15 1DL*



**11.30am – 2.00pm – Lunch provided.
Ring Chris on 07714 235736 to book your place!**

- | | |
|----------------------------|---|
| 3rd Jan | Armchair Aerobics. Let's work off some of that Christmas Spirit! |
| 17th Jan | Pub games! – Dominoes, darts, quoits, curling, table top skittles. |
| 7th Feb | Join us for Ten Pin Bowling at Tameside Wellness Centre, Denton. Lunch included! |
| 21st Feb | Let's play Molkky! A Scandinavian skittle game |
| 7th Mar | Beetle Drive – who will complete their Beetle first? |
| 21st Mar | Live music! Let's have a dance! |

Whilst every effort will be made to adhere to the programme, changes may be made (depending on what we feel like doing!)

*H. REVELL & SONS
LTD.*

A Family of Funeral Directors since
1888

Pre-payment Plans arranged

96 Stamford Street
Stalybridge

0161 338 2520

Proprietors: N.T. Revell
K. Revell *BA (Hons)*

From Our December Book of Remembrance

1 Dec	Dean Stanley	1976	18 Dec	Mary Lloyd	1999
2 Dec	Harriet Shenton	1976		Thelma Adnett	2005
	Harold Harrison Rowbottom	1988		Edith Brayshaw	2010
	Harry Brayshaw	2001	19 Dec	Jonas Ward	2000
4 Dec	Ellen Wooley Lomas	1970	20 Dec	Dorothy Holborn Dawson	2022
7 Dec	Edgar Jones	1990	22 Dec	Jessie Wyld	1991
9 Dec	Jack Fitchett	1951		Gladys Jakeman	1999
10 Dec	Jane Anne Greenhalgh	1978		Winifred Barnshaw	2005
	Malcolm James Donald	2008	23 Dec	Emma Gudger	1962
	Walter Charles Aves	2016		Sarah Hannah Hague	1981
11 Dec	Neil Kershaw	2013		James Stott	1983
12 Dec	Joseph Kinder	1929		Dorothy Stott	2012
	George Woolley Buckley	1990	24 Dec	Mona Jefferson	1988
13 Dec	Frank Turner	1976		Audrey Fallows	2012
	Raymond Stewart	2018		Stephen Karl Walsh	2019
14 Dec	Gertrude Barbara Fitchett	1938	25 Dec	Frank Buckley	1974
	Ernest Ives	1975		David William Heap	1979
	Nora Grace Council	2008		James Reedy	1982
	Philip Edward Davenport	2010		Derek Hibbert	1992
15 Dec	William Dyson Duckworth	2010		Ivy Holt	2009
16 Dec	John Hague	1968		Marian Beatrice Ogden	2013
	Minnie Press	1984	28 Dec	Emily Rosina Pendleton	1987
	Eva Whittingham	1984		Alfred Wilde	1988
	Edith Longden	2008		Thomas Holt	2009
	Nancy Nield	2019		George Henry Burtoft	2010
17 Dec	Anthony John David Gough	1993		Alan Oldham Miller	2011
	Bertha Barnfield	1998	29 Dec	Joan Pickles	2006
	Norman Quest	2001	31 Dec	Alice Shenton	1989
	William Hadfield	2012		Joseph Lees	2000
18 Dec	Martha Ireson	1937		John White	2008
				Madge Aves	2021

+++++



BOOK OF REMEMBRANCE

To have the name of a loved one entered into this special book, and remembered in our intercessions for their anniversary please have a word with one of the wardens.
The cost for the inscription is £10 per entry

+++++

From Our January Book of Remembrance

1 Jan	Ezekiel Lomas	1941	18 Jan	William Frederick Ireson	1962
2 Jan	Edward Cooper	1980		George William Catlow	2000
	Ernest Bramall	1982		Marian Hulme	2002
	Marjorie Day	1982		Reginald Hewitt	2008
	David Cotton	2007	19 Jan	Mary Eastwood	1989
3 Jan	Ivy Marshall	2006	20 Jan	Raymond Jack Clarke	1983
4 Jan	William Parkinson	1943		Katherine Devlin	1988
	Nellie Mellor	1977		Jean Ollerenshaw	2012
	Phyllis Peck	1981		Brian George Mitchell	2024
	Barry Aldred	1999	21 Jan	Heather Alwyn Clarke	2012
5 Jan	Joseph Hibbert	1957	22 Jan	Thomas Howard	1964
	Hugh Shepley	1987		Harry Walton	1967
	Gertrude Sullivan	1998		Eliza Emma Sidebottom	1988
6 Jan	Harry Walton	1988	23 Jan	Jesslyn Tonge	1991
	John Barratt	1996		Neil Hadfield	2011
8 Jan	Fred Harris	1979	24 Jan	Harold Spencer	1962
	George Leonard Eakins	1981		Henry Howard	1981
	James Norman Kelday	2000		Rhoda Hancock	1989
9 Jan	Susan Ann Maud Barnfield	1953		Albert Marcel Hough	2017
	Sarah Clewes	1994	25 Jan	Agnes Smith	1975
	Derek Greenwood	2019		Moreen Branwood	2005
10 Jan	Tom Sidebottom	1979		Carol Hyde	2010
11 Jan	Jesse Horsefield	1984		Joseph Middleton	2019
	Drinda Jefferson	1990	26 Jan	Edith Emma Clinton	1987
	Evelyn Barlow	2003		Nellie Wood	1987
	James Watson	2014		Eric James Chorlton	2001
12 Jan	Ethel Battersby	1992		Margaret Slack	2007
13 Jan	Kathleen Thwaites	1992	27 Jan	Fred Kay	1968
14 Jan	Robert Nicholson	1988		Bridget Bower	1994
	Eva Helen Ollerenshaw	1989		Geoffrey Phillip Brown	1995
	Kyle Martin Cropper	2004		Ronald Bower	2000
	Ramsden		28 Jan	Abraham Newton	1983
15 Jan	James Ireson	1990		Veronica Quinn	1997
	Norman Council	2014		Karen Jane Bradbury	2007
16 Jan	William Gudger	1963		Mildred Bradshaw	2014
	Minnie Schofield	2012	30 Jan	Alice Saxon	1997
17 Jan	David Lees	2011	31 Jan	Alice Ann Priestley	1955
				John Robert Stanley	1990
				John Patrick Higgins	2006

+++++

TAMESIDE (S.A.S) GROUP

Stroke Awareness Support Group

Affiliated to the Stroke Association

We are a social group for all who have survived a stroke,
their families, friends and carer.

We meet on:

Wednesday

10.30 am till 12.30 pm

at The Pavilion, Dukinfield Park

Our aim is to enjoy life, no matter what and have fun and socialise.

Our message is:

DON'T STOP BEHIND CLOSED DOORS, OURS IS OPEN.

We look forward to new members and volunteers to
join us. Come in for a brew and a chat.

Don't be shy...Give us a try!

IF YOU WOULD LIKE MORE INFORMATION

Contact:

RAKSHA on - 07368 816232

HELPING TO REBUILD CONFIDENCE AND INDEPENDANCE